

Company Profile

MIRLES METAL COMPONENTS (P) LTD

Electrical Laminations & Motor Stampings

No. 524 / 662, B. M. Shankarappa Industrial Estate, Magadi Main Road
Srigandhada Kaval, Sunkadakatte, Bangalore 560 091, Karnataka, India

Phone: +91-080-23484390, Mobile: +91 99455 28771

Email: office@mirlesmetal.com Website: www.mirlesmetal.com

GSTIN No.: 29AABCM1648N1Z2, CIN: U31909KA1995PTC018217

Introduction

Established in 1987, MIRLES METAL COMPONENTS PVT. LTD., is a 100% Indian MSME engaged in manufacturing and sales of Electrical stampings and laminations for Submersible Pump Motors, Electric Motors, Transformers, and other pressed components.

The company's strength lies in the extensive manufacturing experience and in-depth knowledge of tooling that enables us to offer a wide range of products that is stringently manufactured as per industry defined standards. The tools are designed in-house to consistently produce the required specifications as per customer requirement.

For the past 35 years we have consolidated our position as a reliable supplier creating a strong and trusted name in the market.

Vision

- To be the supplier of choice for pressed components in every Industry that we serve.

Mission

- Maximize the value to our customers by delivering superior quality products and services on time and within budget
- Create long-term shareholder value while maintaining the highest levels of integrity and commitment
- Focus on continual improvement of our manufacturing facilities and processes, driven by high standards of engineering excellence.
- Create a safe and secure work environment and foster the right resources and capabilities of the team

Goals and Business objectives

Considering key industry trends and challenges – i.e., higher volumes and flexible production, the company has reset its goals and direction to accept new challenges and setting itself larger and wider growth target. The focus now is on technology development and up-gradation. We have installed a high-speed precision power press of 125T capacity with progression dies to enable high quality and large volume production and automated cut to length and stacking machine for transformer strip lamination.

Infrastructure

The Production machinery includes a wide range of power presses ranging from 20T to 125T capacity with the ability to manufacture stampings ranging from 90mm to 260 mm dia. and Laminations from T-17 to T240 sizes. Our press shop is supported with in-house Grinding, cleating and tool maintenance facility ably managed by a team of experienced professionals.

We are well equipped to produce stampings and laminations from the raw material stage to the final finished component stage with required material handling facility, tools with standby facility and inspection instruments.

The tools are designed in-house to consistently produce the required specifications as per customer requirement.

List of Machinery		
PARTICULARS	CAPACITY	NOs.
High Speed Power Press	125T	1
Automated Cut-to-Length & Stacking M/c	--	1
Power Press	60 T	2
Power Press	40 T	2
Power Press	35 T	1
Power Press	25 T	1
Power Press	20 T	1
Power Press	15 T	1
Cleating machine - Hydraulic	--	3
Drilling Machine	--	1
Surface Grinding m/c	--	2
Pedestal Grinding m/c	--	1
Automated De-Coiler	10 T	1
De-Coiler	1.5 T	1
Treadle Shearing m/c	--	4
Power Shearing m/c	--	1
Over-head Crane	8 T	1

Products and Services

- Stampings for submersible Pumps and Open well pumps up-to 260 mm Dia. The Stator and Rotor stampings can be supplied in loose or cleated form as per customer requirement.
- All types of EI Laminations and custom-built strip laminations supplied in loose or assembled / stacked form as per customer requirement

Raw material:

- CRNO Steel of grades M45, M47, M36, M22, and M18 from SAIL, JSW Steel Ltd
- CRNGO 2212- RUSSIAN GRADE
- IMPORTED CRNGO with Watt Loss up to 6.3 Watt/kg @ 1.5 tesla – China, Sweden, Japan, Korea, etc.,

List of Tools:

#	PRODUCT	TOOL	TYPE
1	E/I Lamination	Compound Tool	Type – 43
2	E/I Lamination	Compound Tool	Type – 8
3	E/I Lamination	Compound Tool	Type – 8B
4	E/I Lamination	Compound Tool	Type – 15
5	E/I Lamination	Compound Tool	Type – 12
6	E/I Lamination	Compound Tool	Type – 30
7	E/I Lamination	Compound Tool	Type – 3
8	E/I Lamination	Compound Tool	Type – 17
9	E/I Lamination	Compound Tool	Type – 16
10	E/I Lamination	Compound Tool	Type – 180
11	E/I Lamination	Compound Tool	Type – 6
12	E/I Lamination	Compound Tool	Type – 210
13	E/I Lamination	Compound Tool	Type – 240

#	PRODUCT	O.D. (mm)	I.D. (mm)	BORE (mm)
1	Motor Stamping	222.25	112	41.27
2	Motor Stamping	177	88	38.5
4	Motor Stamping	126 (10802P)	63	25
5	Motor Stamping	105	54	20
6	Motor Stamping	162.5	96.5	24
7	Motor Stamping	126 sub	63	38.5
8	Motor Stamping	222.25 MB	120.65	41.27/47
9	Motor Stamping	260	139	55/62

#	PRODUCT	O.D. (mm)	I.D. (mm)	BORE (mm)
1.	Submersible Stamping	134	67	38.5
2.	Submersible Stamping	137	72	43.5
3.	Submersible Stamping	126	63	38.5
4.	Submersible Stamping	92.5	50	30
5.	Submersible Stamping	139	68	38.5/43.5
6.	Submersible Stamping	140	70	24
7.	Submersible Stamping	150 Sq	96.5	24
8.	Submersible Stamping	139	78	43.5 /38.5
9.	Submersible Stamping	134D Sub	72	29

#	PRODUCT	TOOL	TYPE
1	E/I Lamination	Progressive Tool	Type – 8
2	E/I Lamination	Progressive Tool	Type – 8B

#	PRODUCT	TOOL	O.D. (mm)	I.D. (mm)	BORE (mm)
1	Motor Stamping	Progressive Tool	177	88	38.5
2	Motor Stamping	Progressive Tool	222.25	112	41.27 / 55
3	Submersible Stamping	Progressive Tool	92.5	50	30 / 32.25
4	Submersible Stamping	Progressive Tool	138	72	38.5/43.5/47

Testing and Quality

We place a great emphasis on quality, right from purchase of the right grade of material to final checking. Tests are conducted at various stages of manufacturing to ensure dimensional accuracy, durability, corrosion resistance as per customer specifications.

#	Test Requirement	Test Equipment
1	RM Condition / Composition	Inspection / Test Certificate from MFR.
2	Surface Condition	Depth gauge, Vernier Caliper
3	Watt loss testing	Digital Iron Loss Tester
4	Insulation Resistance	Insulation Tester
5	Thickness Tolerance	Micrometer, Gauges
6	Tolerance on Shape	Digital Calipers
7	Checking of tolerances	Custom made "GO NO-GO" gauges

Board of Directors

Mr. Y.P. GOPIKRISHNA; B.E (Industrial Production)

MANAGING DIRECTOR

Mr. Gopikrishna graduated with a first class in Industrial Production Engineering from MSRIT, Bangalore in 1984. He started his entrepreneurial journey immediately by taking up job work for transformer laminations. In parallel he completed a 2-year course in Tool & Die making, Jig Fixtures, Injection molding at NTTI (Nettur Technical Training Institute), Bangalore. He has also completed short term course in Tool & Die making, Jig Fixtures & Injection molding from GTTC (Govt. Tool Room Training Centre). He has attended various seminars and courses on management technique, TQM (Total Quality Management) and ISO standards.

His hard work and dedication have been instrumental in bringing about a steady growth and improvement of the company. He has extensively traveled all over the country to expand the market and establish a good business network. He is well known amongst his customers for keeping up quality standards, delivery schedule and commitments.

He has been on the board of Mirles Metal Components (P) Ltd since 1995.

GEETHA A.N.; B.E, MBA

DIRECTOR

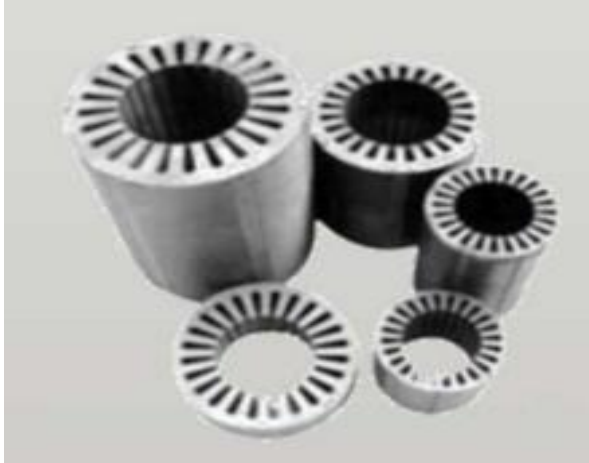
Mrs. GeethaA.N holds a Bachelor's degree in Engineering and a Master's degree in Business Administration from The University of Mysore. She has over 20+ years of experience in Product and Process Quality Assurance, Program Management Office, Operations Excellence & Change Management practices.

She has a successful track record of ensuring Product and Process Quality in conformance with ISO, CMMi and Aerospace AS9100 standards. She has vast experience in defining, developing and implementing improvement strategies and initiatives to achieve business goals. Her key focus has been to improve the process and operational efficiency within the company.

She has been on the board of Mirles Metal Components (P) Ltd since April 2013.

Products:

Motor Stampings:



E & I Laminations:



Strip Laminations:



Customers:

UPS and Transformer Manufacturers:

1. Fuji Electric India Pvt Ltd, Chennai
2. Ganesh Coil Works, Bangalore
3. Atandra Energy Pvt Ltd, Chennai
4. RC All-Tech Power Systems Pvt Ltd, Hyderabad
5. Likitha Transformers, Bangalore
6. Naren Electronics, Bangalore

Pump Manufacturers:

1. Deccan Pumps Pvt. Ltd, Coimbatore
2. Ekki Pumps Pvt. Ltd., Coimbatore
3. Deccan Industries, Coimbatore